



# With Councils through the ups and downs - Australia's fastest-growing asset management platform

SCAN  
HERE TO  
DISCOVER  
MORE



[www.assetvision.com.au](http://www.assetvision.com.au)

Asset Vision is the leading enterprise asset management solution built for and trusted by councils across Australia. Quick to deploy and simple to configure, it brings asset portfolios, valuations, AI defect detection, maintenance, built-in maps and capital works into one easy-to-use system.

With advanced analytics and interactive dashboards, Asset Vision helps councils shift from reactive to proactive: anticipating issues, planning with confidence and delivering cost-efficient services. By smoothing the highs & lows of the asset lifecycle, councils create smarter, more resilient communities.



## REGISTER

Any asset, attribute, component and hierarchy with built in GIS capability



## VALUE

Track asset valuations and lifecycle costs with standard reports



## AUTOPILOT+AI

Use AI for road and pathway inspections to improve efficiency and safety



## MOBILISE

Simple iOS and Android field service management app for staff and contractors



## PREDICT

Forecast maintenance and capital plans using degradation patterns and asset health



## DELIVER

Plan, schedule, deliver and monitor all maintenance and capital works in a single platform



## ANALYSE

Inbuilt spatial analytics. Flexible reporting and dashboards



## CONNECT

API Cloud services make data connections a breeze

WITH COUNCILS THROUGH THE UPS AND DOWNS

# Asset Vision

# Experience the Power of AI-Driven Enterprise Asset Management

As we continue to innovate and expand, Asset Vision remains committed to delivering reliable, user-friendly asset management solutions that support the infrastructure vital to our communities. The platform is ready to import your entire asset portfolio, and set up maintenance and capital schedules.

By leveraging the platform's advanced analytics and real-time data insights, councils can now proactively maintain infrastructure, plan for future investment needs, and deliver superior services to their communities for the lowest possible lifecycle costs.



## PRODUCTIVITY

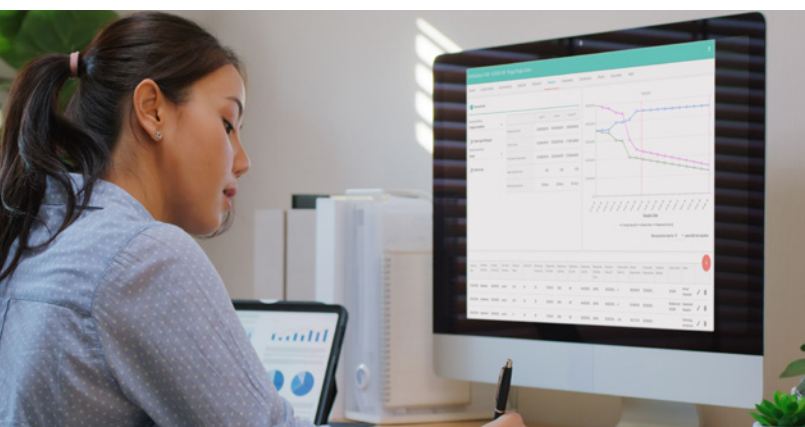
Improve productivity and enable better investment and planning decisions by:

- Hierarchical & spatial Asset Register with embedded GIS
- Easy to use offline capable mobile app
- Make changes to platform without vendor help
- Out of the box reports for AMP's and LTFP's

## EASY TO USE MOBILITY

A complete mobility solution designed for the field that connects staff, contractors, and safety in one platform.

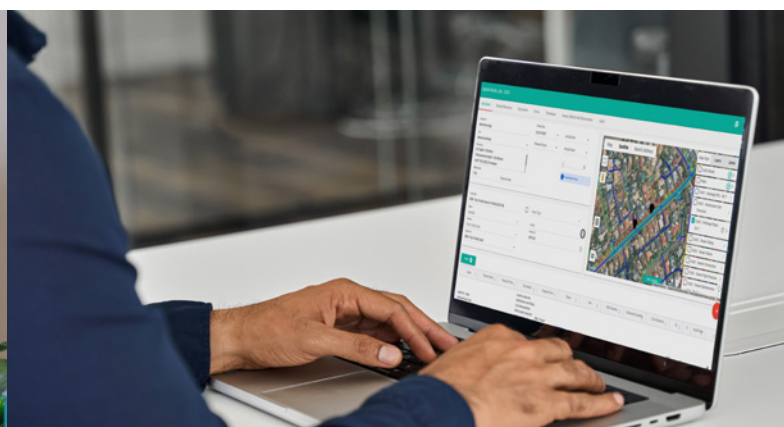
- Industry leading mobility solution
- Solution for internal staff and contractors
- Update assets offline in the field
- Ensure OHS compliance with all integrated forms



## AUDIT COMPLIANT VALUATIONS

Streamline your valuation process with built-in compliance and reporting.

- Suite of inbuilt transactions for AASB
- Support for componentisation
- Suite of industry reports available
- Bulk transactions for efficient processing



## MULTI-YEAR CAPITAL WORKS

Bring clarity and coordination to capital works with map-based planning and cross-department alignment.

- Map-based capital works for all council assets
- Gain alignment across departments
- Whole-of-council approach
- Integrated mobile/contractor works





# TRANSFORM YOUR ROAD & PATHWAY INSPECTIONS WITH ADVANCED, AI-POWERED AUTOMATION.

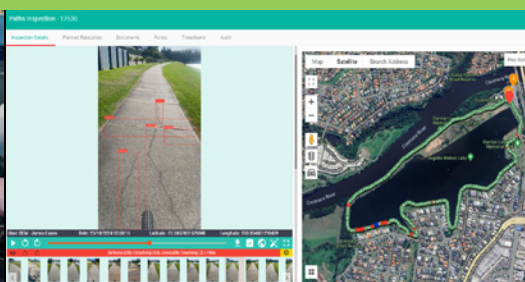
**AutoPilot+AI transforms road and pathway corridor inspections - making them safer, faster, and smarter.**

Hands-free image capture lets field workers stay focused on the road, reducing manual stops, note-taking, and roadside risk. Virtual playback and remote defect analysis improve safety while boosting efficiency.

From hazard detection to job creation, AutoPilot streamlines workflows and builds a

rich visual record for planning, audits, claims, and customer service. It works offline where needed, ensuring full functionality even in remote areas. AutoPilot is built into the Asset Vision EAM platform but can also operate standalone, integrating easily with your existing asset management systems.

AutoPilot delivers immediate, measurable results - enhancing transparency, decisions, and performance.



## SAFETY

Keeps operators hands on the wheel and their eyes on the road.

## PRODUCTIVITY

Reduces the time from defect/hazard identification to job creation.

## FLEXIBILITY

Designed for easy setup, quick activation and seamless integration.

# AUTOPILOT CAPTURES A DIGITAL TWIN AND AUTOMATICALLY IDENTIFIES ROAD CORRIDOR DEFECTS USING AI TECHNOLOGY.

SCAN  
HERE TO  
DISCOVER  
MORE



[www.assetvision.com.au](http://www.assetvision.com.au)

AutoPilot enables the Asset Vision mobile app to automatically capture road or pathway images every 10 metres during inspections. These images are uploaded to the cloud, analysed for defects, and linked to the inspection for playback via the Asset Vision interface. Inspectors can also log defects hands-free using a Bluetooth button and voice-to-text.

Inspections are reviewed through a Google-based map interface, showing routes, image locations, and detected defects in real time. Users can replay inspections like a video, step through images, or navigate directly via the map or timeline. All images include metadata (date, time, GPS) and can be used to create jobs or records. Stored indefinitely, this data supports long-term analysis, compliance, and historical comparison.



## DRIVEN BY AI

AutoPilot+AI delivers benefits across key areas including:

- Improved inspection safety & efficiency
- Incident investigations
- Disaster recovery
- Future works planning
- Safety Audits



## AUTOMATIC DEFECT DETECTION

AutoPilot + AI uses LiDAR to provide approximate measurements of detected defects including:

- Potholes, bleeding and flushing
- Cracking, crocodile cracking and edge defects
- Leaning guideposts

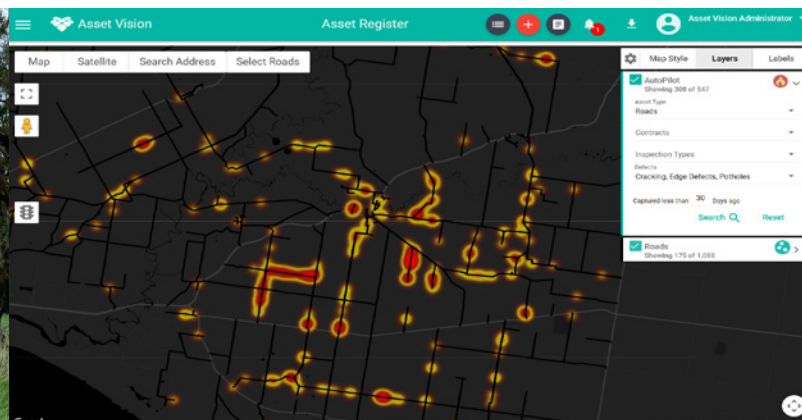
with many more to come



## REWIND

Visually compare changes over time at any location:

- Instant access to historical imagery
- Simply draw a box in the browser
- View that area change over time
- Support analysis of degradation and event claims



## AI DEFECT HEATMAP

Spot problem areas instantly. Heatmap feature brings road defects to life, helping councils prioritise maintenance, allocate resources smarter, and keep communities moving safely.